



**Sales brochure**



Rivière

Villa C

Villa B

Villa D

Villa A

12

10

14

16

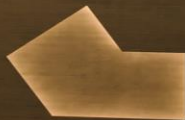
A

B

C

D

Chemin de la Gabiule



HOLLOW TREE VILLAS

*wave art*



# Features.



🏠 Total gross floor area ~ 295 m<sup>2</sup>

🛏 8 rooms

🛏 3 or 4 bedrooms

🛁 3 or 4 bathrooms

🏡 Plots from 569 sq m to 840 sq m

🏡 Private gardens from 361 sq m to 592 sq m

📅 Delivery 1<sup>st</sup> quarter 2025

**Selling price upon request**





## Contemporary villas close to the lake.

### **AUTHORIZATION IN FORCE!**

Come and discover “Hollow Tree Villas” a new development composed of 4 THPE (very high energy performance) contemporary turnkey villas situated on chemin de la Gabiule 12-14 in the commune of Collonge-Bellerive.

This group of 4 villas is ideally positioned in a quiet residential neighbourhood, facing a huge plot in the agricultural zone, close to the lake and the centre of Vézenaz.

Each villa has a spacious interior thanks to a total gross floor area of approximately 295 sq m spread over 3 levels including a finished basement with natural light.

**Delivery set for 1<sup>st</sup> quarter 2025**



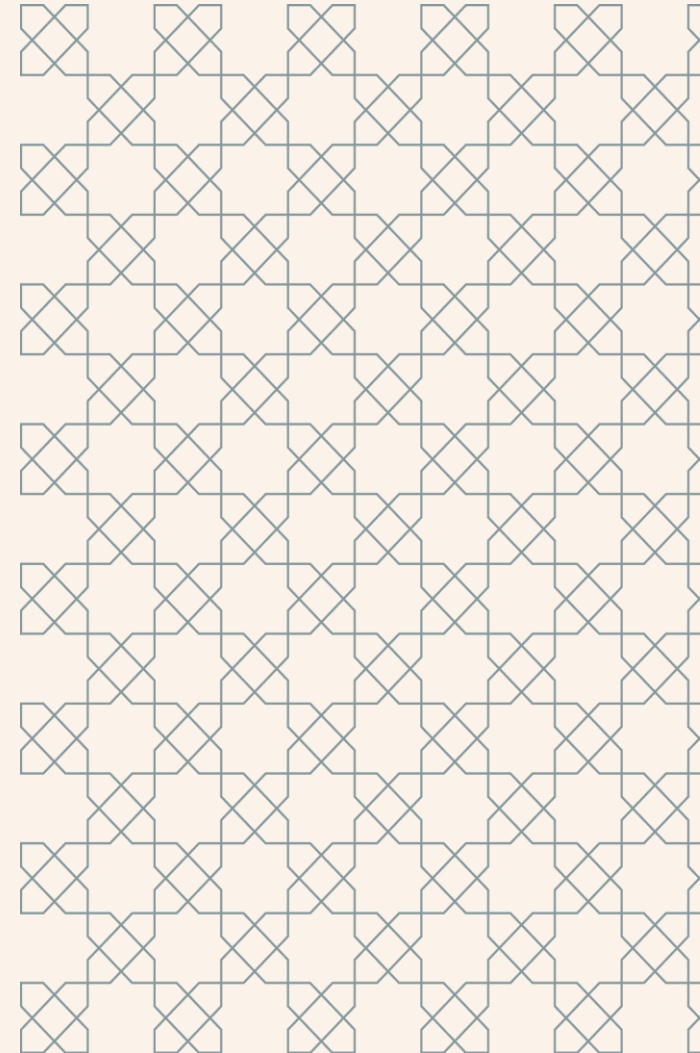








- Very close to lake and centre of Vézenaz
- Pure contemporary architecture
- Wooded surroundings next to a field
- Quiet residential neighbourhood
- Secured residence with automatic gate
- High quality finish
- THPE energy standard (very high energy performance)
- Total gross floor area of approximately 295 sq m
- 3 to 4 rooms: according to choice
- Basement of 100 sq m with natural light





# Environment.



## Schools

- ◆ Collonge School
- ◆ Montessori School Rive Gauche

## Restaurant

- ◆ Le Floris
- ◆ La Belotte

## Shops

- ◆ Shops in Collonge-Bellerive
- ◆ Manor Vésenaz
- ◆ Coop Vésenaz

## Public transport

- ◆ Bus route E at 200 meters

**Geneva Lake**

**Port of Corsier**



**Non-constructible agricultural zone**







MANAGEMENT

*Wave art*

SALES



ARCHITECT

HertelTan

—Architectes



**Naef Prestige | Knight Frank**

+41 22 839 39 60

[geneve@naefprestige-knightfrank.ch](mailto:geneve@naefprestige-knightfrank.ch)

All details are for information only and are not legally binding.